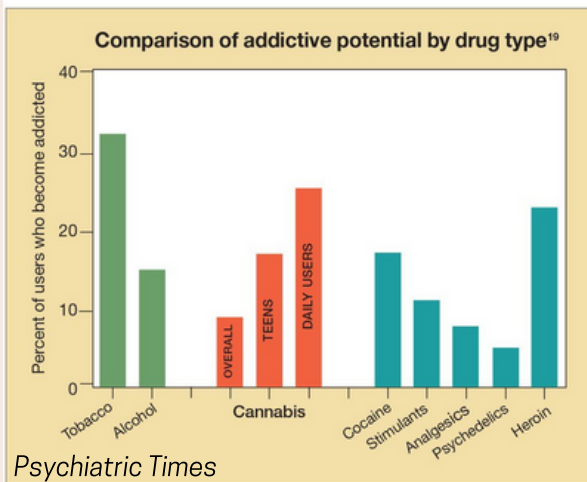




# News & Headlines

## - THE LATEST RESEARCH ON MARIJUANA -

### ADDICTION



### MENTAL ILLNESS

**Marijuana has been found to be involved in as much as 50% of cases of psychosis, schizophrenia, and schizophrenic episodes. (3)**

- People who use marijuana on a daily basis were 3xs & those who used high potency marijuana were 5xs more likely to be diagnosed with psychosis compared with people who never used the drug. (4)
- There are over 20,000 peer-reviewed research articles linking marijuana use to severe mental health outcomes, as well as consequences for physical health. (5)
- In 2014, people who had cannabis use disorder accounted for 11% of all the psychosis cases in the ER, (90,000 cases, 250 a day; triple the number in 2006). (6)
- 47.4% of patients with cannabis-induced psychosis converted to either schizophrenia or bipolar disorder. (7)
- A federal survey of more than 9,000 cases, found that marijuana use was associated with a doubling of domestic violence in the U.S. A. (16)
- Of 23 (states where marijuana is legal), 78% had a statistically significant acceleration of opioid death rates after legalization. (8)

### POTENCY

**THC is the chemical in marijuana that produces the high.**

- 1960s & 1970s THC level = 1% - 3%
- 1980s & 2000s THC level = 1% - 5%
- **Today's THC level = 14% - 35% (dry form)**  
**= 35% - 99% (vape form)**

**THC VAPING**  
**Over 2,700**  
**hospitalizations and**  
**more than 60 deaths.**

(Centers for Disease Control and Prevention, 2020)

### PARENTAL USE

- Marijuana is the #1 substance involved in deaths from child abuse and neglect in the states that track the substances linked to child abuse. (9)
- 1 in 6 children hospitalized for lung inflammation test positive for marijuana exposure (2)
- Children whose mothers used marijuana during pregnancy were 50% more likely to be diagnosed with autism. (1)
- Marijuana use during pregnancy is associated with 2.3 times greater risk of stillbirth. (10)
- Infants exposed to marijuana in utero were more likely to have lower birth weight, and more likely to be placed in the neonatal ICU. (11)
- Marijuana use is associated with physical violence and the risk of violence was higher among heavier users of marijuana. (12)
- Those who were exposed to marijuana in the womb...had elevated psychopathology, problems with depression and anxiety, as well as ADHD... and lower birth weight. (13)
- In the US, 1 in 25 pregnant women report using marijuana. (14)
- A breastfeeding baby can absorb as much as 8 xs more THC than its mother. (12)
- Marijuana smoke contains 50%-70% more cancer-causing substances than tobacco smoke. A single marijuana joint could cause as much damage to the lungs as up to 5 regular cigarettes. (15)

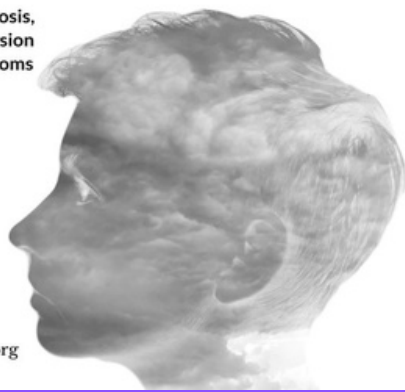
Of all the drugs that can induce psychosis, cannabis results in the highest conversion rate from temporary psychotic symptoms to a chronic psychotic disorder like schizophrenia or bipolar disorder.

<https://doi.org/10.1176/appi.ajp.2017.17020223>

Drug	Conversion Rate
cannabis	47%
amphetamine	32%
hallucinogens	28%
opioids	21%



EveryBrainMatters.org



National Institute on Drug Abuse (NIDA),  
part of the National Institutes of Health – June 2021 study

**280,000**  
young adults ages 18-35:

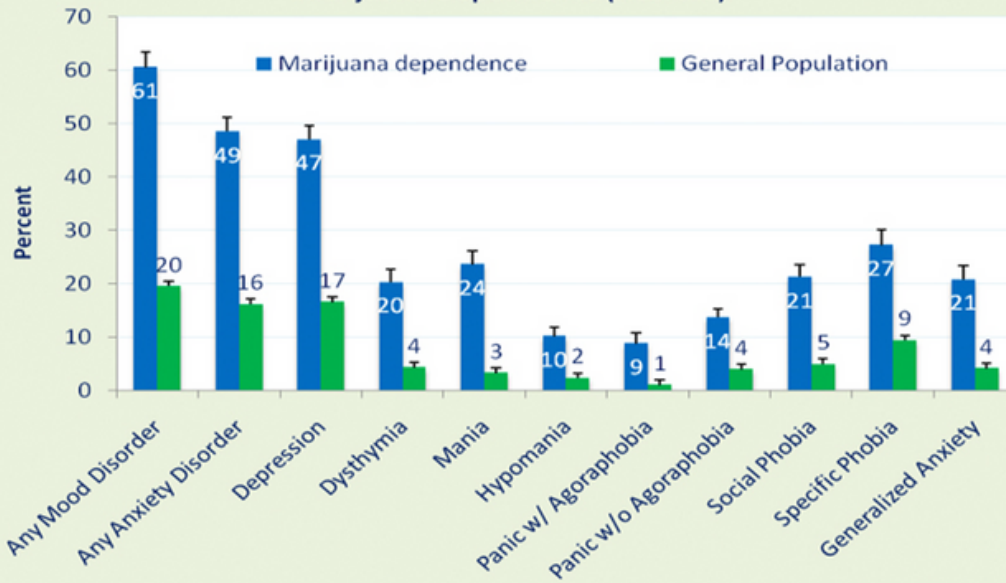
Cannabis use was associated with increased risks of thoughts of suicide, suicide plan, and suicide attempt (regardless of whether someone was also experiencing depression).

<https://www.nih.gov/news-events/news-releases/cannabis-use-may-be-associated-suicidality-young-adults>



JOHNNY'S  
AMBASSADORS

### Mood & Anxiety Disorders Among Respondents with Marijuana Dependence (NESARC)



Those who were dependent on marijuana (used more than 2xs a week) had much higher rates of many mental health disorders.

Not Only Potency, But Consumption Levels: What Do Users Look Like Today?



(Caulkins, 2018)

The change in marijuana potency today (daily users) versus 20 years ago (average weekend user) is akin to the caffeine change from one 20 oz cola a day, to thirty-three 16 oz cappuccinos a day.



"In my 20 years of research on human cells, I have never found any other drug including heroin, which came close to the DNA damage caused by Marijuana."

-Dr. Akira Morishima, Columbia University

## Second-hand marijuana smoke has the SAME effect on arteries - but it takes longer to recover from

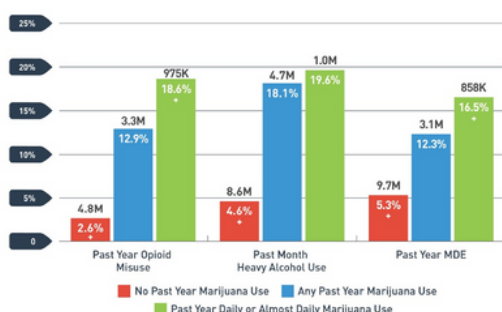
- It took rats 90 minutes to recover from exposure to secondhand marijuana smoke
- That is three times longer than it took their blood vessels to return to normal after being exposed to secondhand tobacco smoke
- Other than nicotine and cannabinoids, marijuana and tobacco smoke share most of the same compounds
- University of California, San Francisco researchers warn that they have 'proven that marijuana smoke is not harmless'

By NATALIE RAHHAL FOR DAILYMMAIL.COM

PUBLISHED: 10:18 EDT, 22 March 2018 | UPDATED: 14:35 EDT, 22 March 2018

### Co-Occurring Disorders: Adult (26 and older) Opioid Misuse, Heavy Alcohol Use, and Major Depressive Episode by Marijuana Use Status

PAST YEAR/MONTH, 2017, 26+



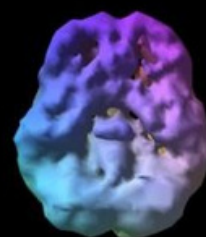
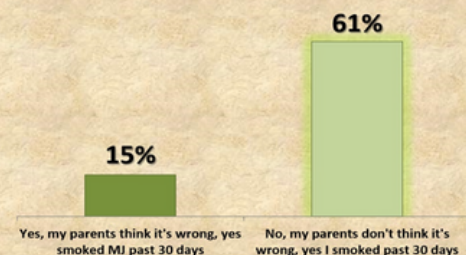
Legend: No Past Year Marijuana Use, Any Past Year Marijuana Use, Past Year Daily or Almost Daily Marijuana Use

+ Difference between this estimate and the estimate with past year marijuana use is statistically significant at the .05 level.

SAMHSA  
Substance Abuse and Mental Health Services Administration

## Community and Social Norms

❖ High school students who believe their parents don't feel it is wrong for them to smoke marijuana were 4x as likely to use (MIYHS, 2011).



WHOSE BRAIN ARE WE LOOKING AT?

28-YEAR-OLD WITH 10 YEARS OF MOSTLY WEEKEND USE OF MARIJUANA. NOTE THE DECREASED PREFRONTAL CORTEX AND TEMPORAL LOBE ACTIVITY

For Questions & Sources:  
shari@omniyouth.net  
www.omniyouth.net



## Sources Cited:

1. <https://doi.org/10.1038/s41591-020-1002-5>
2. <https://www.aap.org/en-us/about-the-aap/aap-press-room/Pages/Colorado-Study-Finds-One-in-Six-Children-Hospitalized-for-Lung-Inflammation-Positive-for-Marijuana-Exposure.aspx>
3. <https://www.psychiatryadvisor.com/home/topics/addiction/cannabis-use-disorder/cannabis-induced-psychosis-in-teenagers-and-young-adults-risk-factors-detection-management/2/>
4. [https://www.thelancet.com/journals/lanpsy/article/PIIS2215-0366\(19\)30048-3/fulltext](https://www.thelancet.com/journals/lanpsy/article/PIIS2215-0366(19)30048-3/fulltext)
5. Smart Approaches to Marijuana (SAM). (2020). Lessons Learned from State Marijuana Legalization. Retrieved March 25, 2021, from <https://learnaboutsam.org/wp-content/uploads/2020/12/2020-Impact-Report1.pdf>.
6. <https://www.ncbi.nlm.nih.gov/pmc/articles/PMC6913867/>
7. <https://pubmed.ncbi.nlm.nih.gov/29179576/>
8. <https://www.medrxiv.org/content/10.1101/19007393v2.full.pdf>
9. [https://www.dfps.state.tx.us/About\\_DFPS/Reports\\_and\\_Presentations/PEI/documents/2019/2019-03-01\\_FY2018\\_Child\\_Fatality\\_and\\_Near\\_Fatality\\_Annual\\_Report.pdf](https://www.dfps.state.tx.us/About_DFPS/Reports_and_Presentations/PEI/documents/2019/2019-03-01_FY2018_Child_Fatality_and_Near_Fatality_Annual_Report.pdf)
10. <https://www.nichd.nih.gov/newsroom/releases/121113-stillbirth-drug-use>
11. <https://bmjopen.bmj.com/content/bmjopen/6/4/e009986.full.pdf>
12. <https://www.legalnotsafe.ca/oummouel3to2up5u83n7rgk4cordby>
13. <https://www.futurity.org/marijuana-during-pregnancy-2445932/>
14. <https://www.drugabuse.gov/news-events/news-releases/2019/06/study-finds-increased-cannabis-use-during-pregnancy>
15. <https://www.politifact.com/factchecks/2014/mar/06/michael-cerullo/ri-psychotherapist-says-marijuana-contains-50-70-p/>
16. <https://www.ncbi.nlm.nih.gov/pmc/articles/PMC6461328/>

## Image Sources:

1. <https://pubs.niaaa.nih.gov/publications/arh29-2/107-120.pdf>
2. Smart Approaches to Marijuana
3. [www.maine.gov/dhhs/samhs](http://www.maine.gov/dhhs/samhs)
4. Amen Clinics

**Figure 11. Confirmed Child Abuse or Neglect Fatality by Substance Abuse by Perpetrator**

